



Institute on Disability/UCED



Department of
**Intellectual &
Developmental Disabilities**

TN START
Assessment &
Stabilization Teams

Karen L. Weigle, Ph.D.
Licensed Clinical Psychologist, HSP
Associate Director, National Center
for START Services

Michelle Bagby, M.A., LBA, BCBA
TN DIDD Director of Behavioral
Health & Crisis Services
TN START Clinical Director



START

(Systemic, Therapeutic, Assessment, Resources and Treatment)

The **National Center for START Services (since 2009)** at the UNH Institute on Disability/UCED is an organization of experts in the mental health aspects of IDD who develop innovative MHIDD training programs, conduct research, and facilitate the development of START programs across the country.

START is an evidence-based model of **cross system crisis prevention & intervention services** for individuals aged 6 and older with intellectual and developmental disabilities and mental health needs. START was first developed in 1988.



UNH/IOD National Center for START Services Building Capacity





Why Do We Use a Fidelity Based Model?

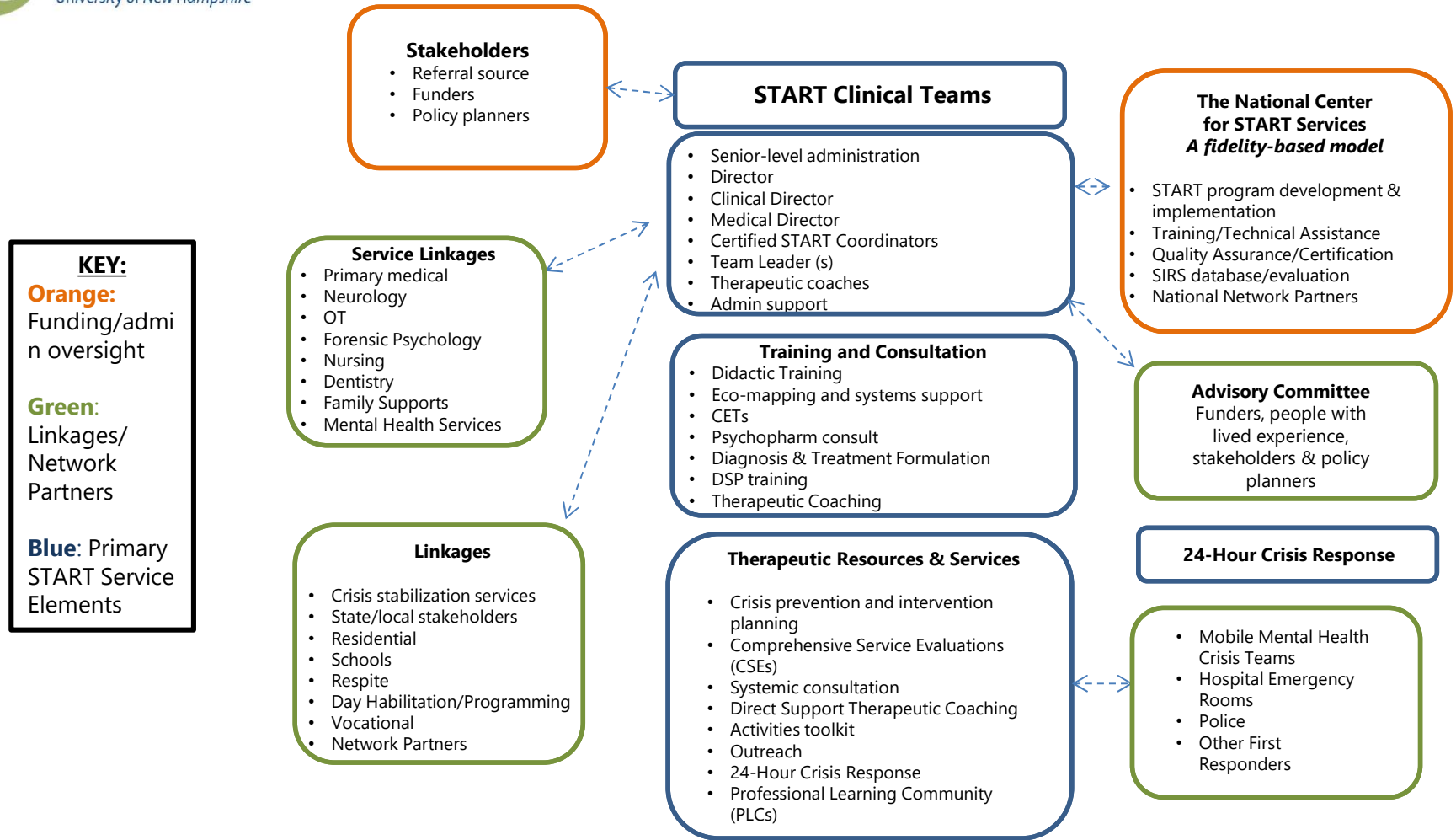
- Evidence-based
- What you receive should not depend on where you live
- Building capacity

What does this mean?

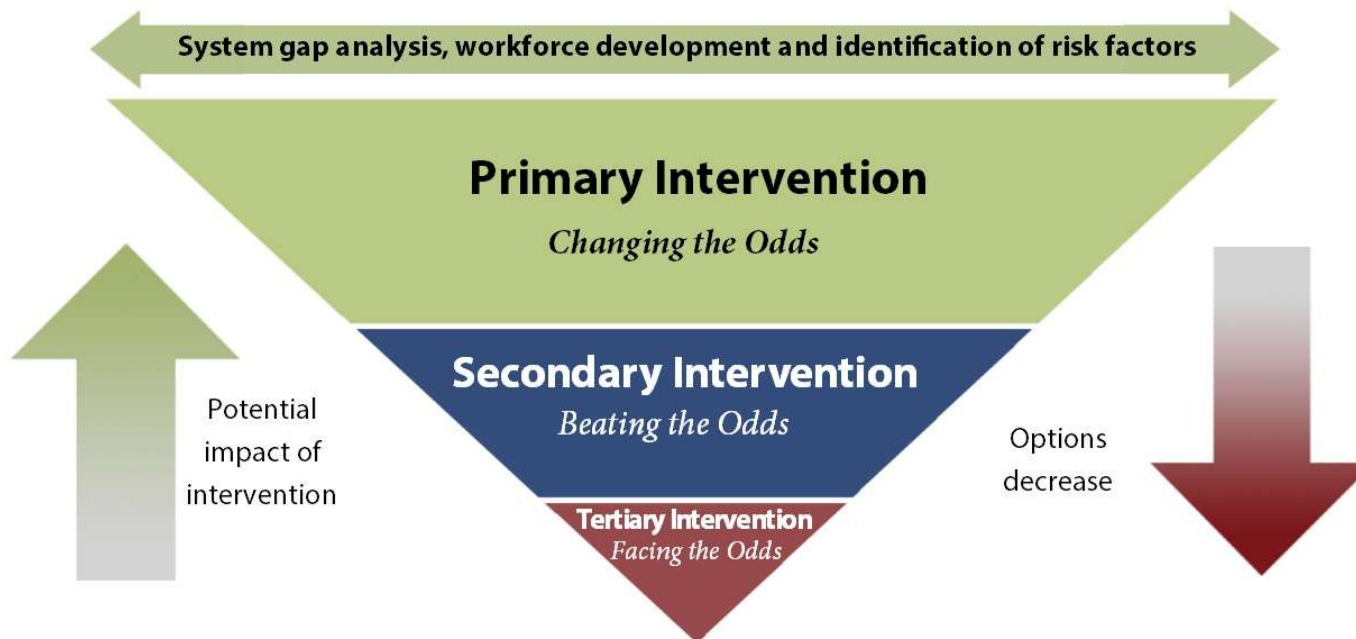
- Adherence to guiding principles
- Evidence-based
- Effective integration in local systems is needed



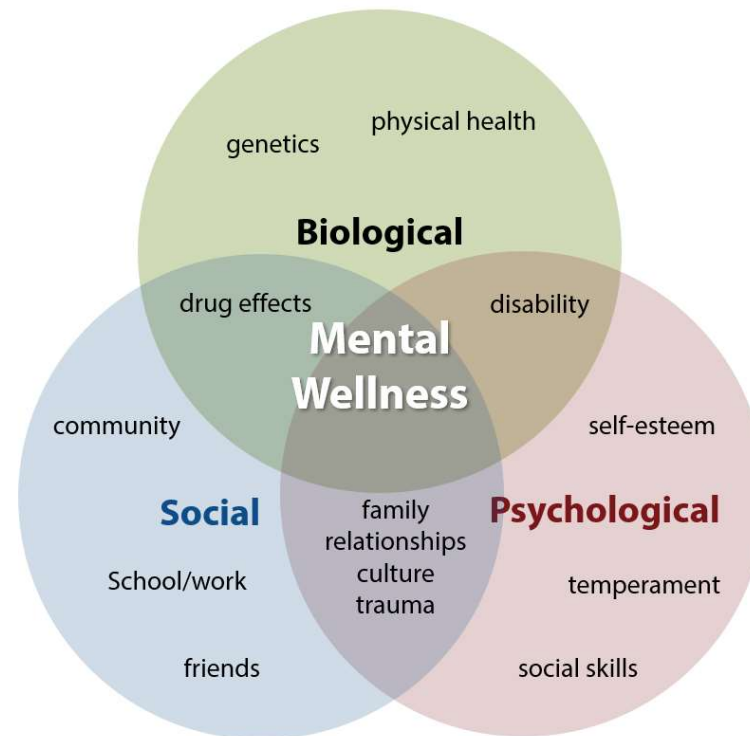
START Model Overview



Public Health Model & START: Numbers Benefiting from Intervention



Integrated Health Bio-Psycho-Social approach (Engel, 1979) considers the **biological**, **psychological** and **social** strengths and vulnerabilities related to mental wellness and how these different factors might contribute and impact one another.



Engel, G. (1979). The biopsychosocial model and the education of health professionals. *General Hospital Psychiatry*, 1(2), pp.156-165.

The Goal is PERMA

Positive Emotion-Engagement-Relationships-Meaning-Achievement



Methods include assessment and coaching, linkages and collaboration



A highly skilled workforce



Therapeutic coaching to build capacity



Cross systems crisis prevention and intervention planning

Outcomes Associated with START

Health and service data on all individuals enrolled in START programs are entered into SIRS and analyzed to measure outcomes and trends.

Across the US, individuals enrolled in START have shown improvements in several key outcome measures including:

- High rates of stabilization following crisis
- Reduced psychiatric hospitalization and ED usage
- Increased satisfaction with mental health and support services



START Services 2021

Visit the Center for START Services website for the most up-to-date map of START Services nationwide

<https://centerforstartservices.org/locations>



TN



**Bringing START to
Tennessee**

TM

Justification: DIDD FY21 Crisis Data

Type of Incident	East	Middle	West	Total
911 Calls	1014	1506	907	3427
Police on Scene	492	687	609	1788
Incarceration	18	23	25	66
Mobile Crisis Calls	124	162	232	518
Psychiatric Hospitalizations	99	134	129	362

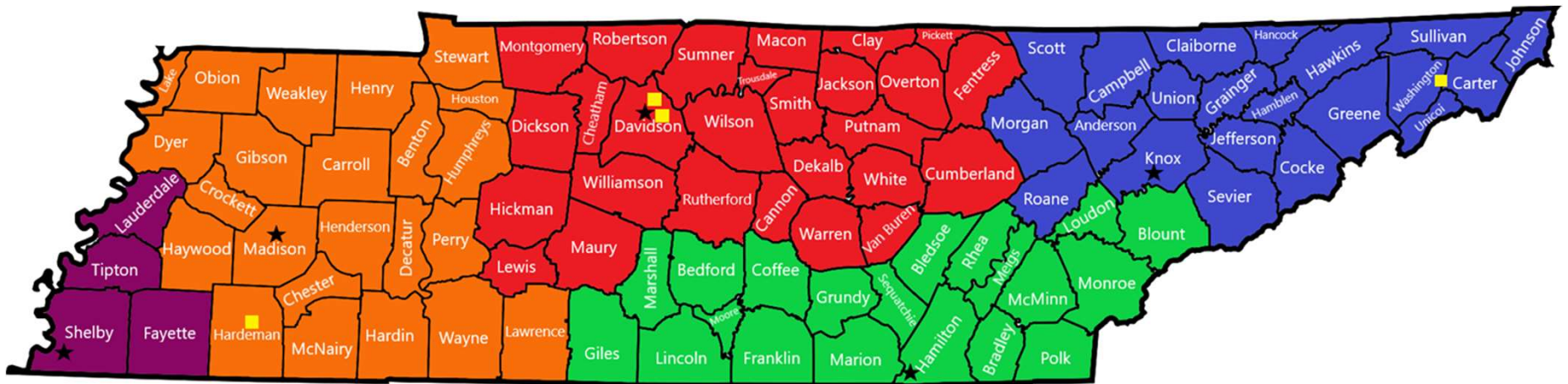
Current Crisis System

- Mental Health Hospitals
- Mobile Crisis
- Professional Clinical Services
- Behavioral Health Benefits
- Therapeutic (Behavior) Respite
- Harold Jordan Center
- ECF Group 7 & 8 Services
- Clinical Consultation & Education
- *NEW*: TN START AST

TN START AST

- MHIDD
- Statewide Coverage
- 5 Teams across 5 regions

TN START AST Regions



Regions

- Nashville Region
 - Knoxville Region
 - Chattanooga Region
 - Jackson Region
 - Memphis Region
-
- Therapeutic Respite
& Harold Jordan Center

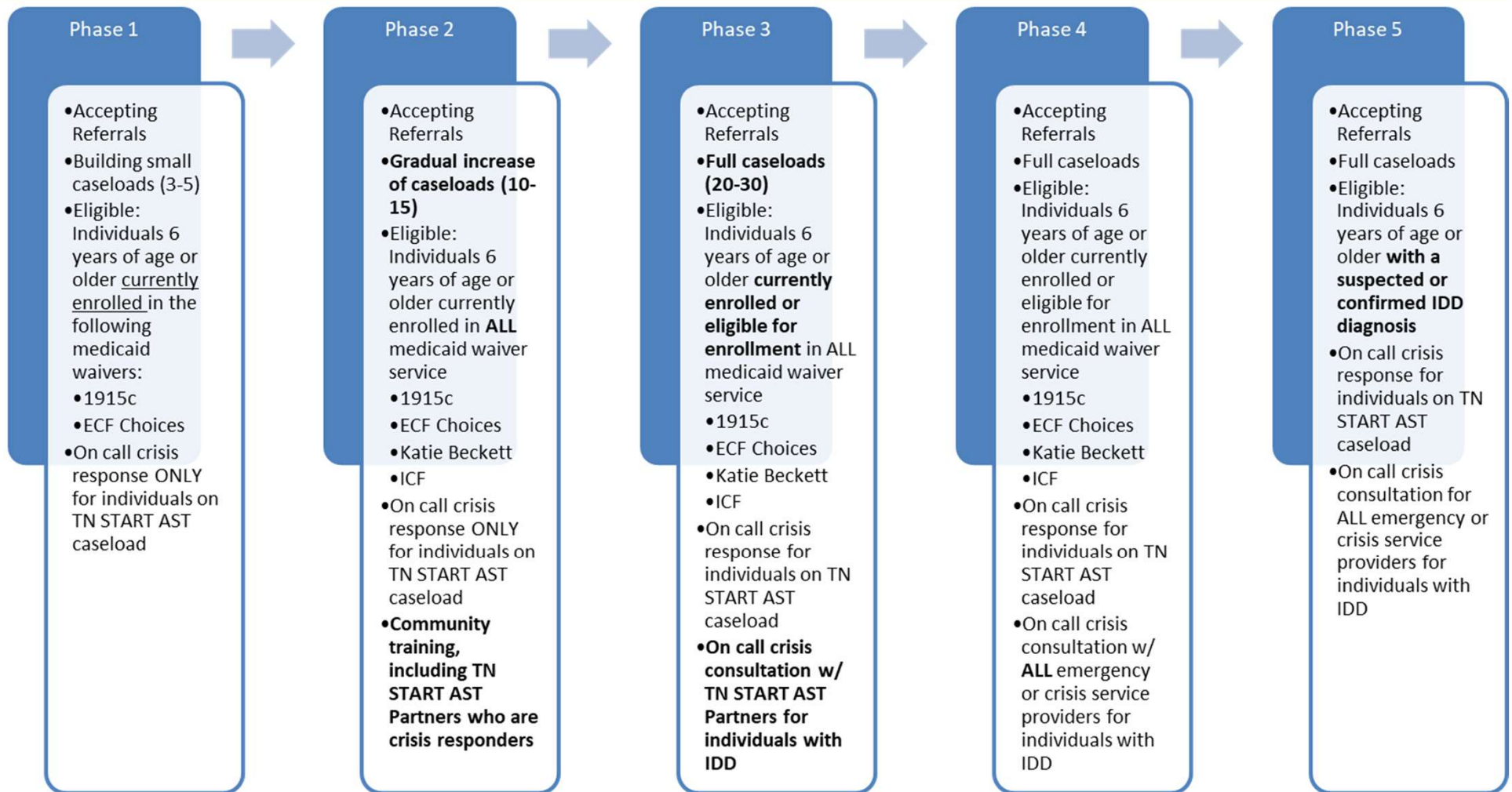
TN START AST Service Objectives

- Greater involvement in crisis stabilization
- 24/7 Crisis Response & Consultation
- Comprehensive assessment
- Cross-systems stabilization planning
- Strong community inclusion values

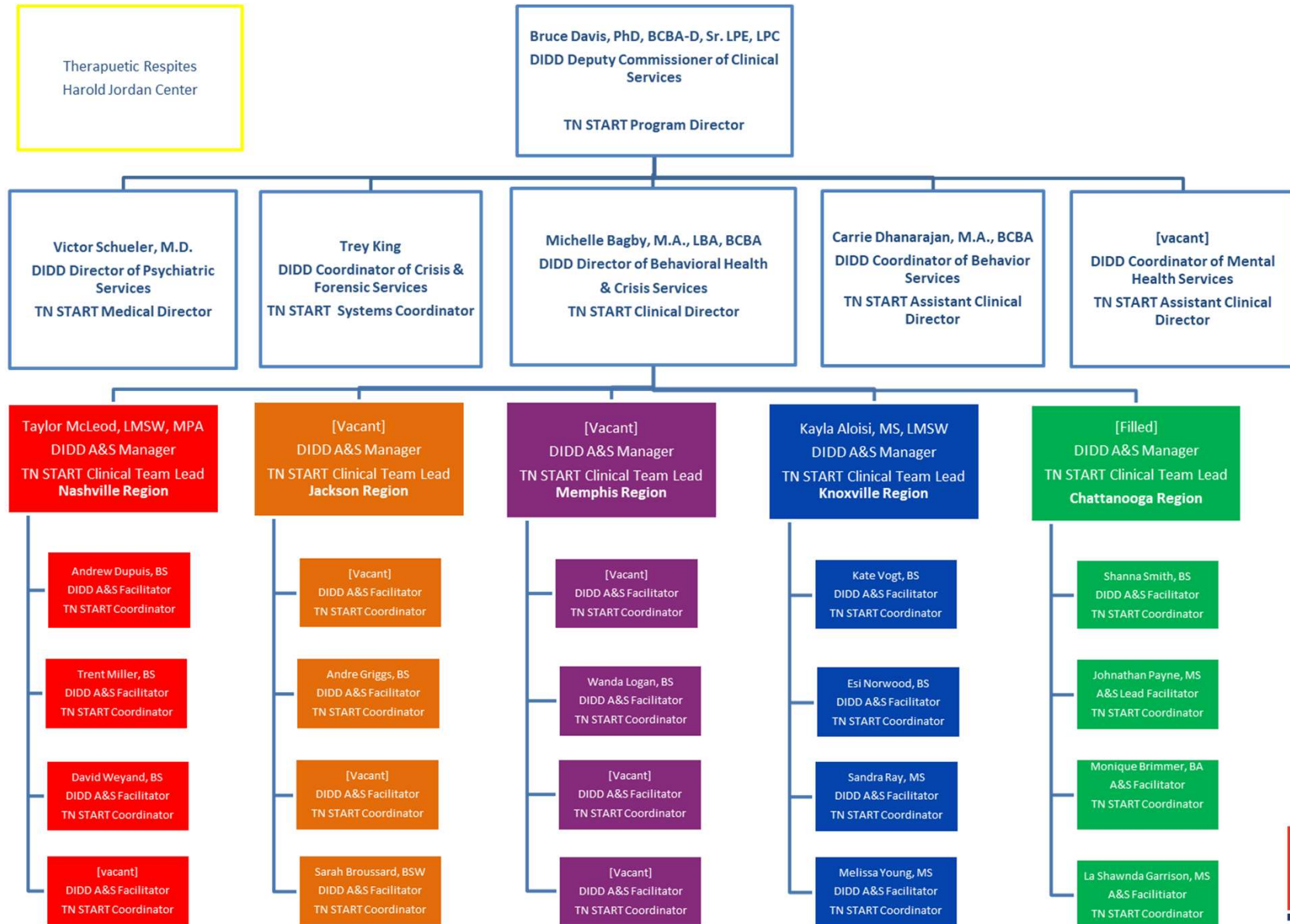
TN START AST Systemic Objectives

- Clinical consultation, education & training
- Formalized network building
- Systemic analysis, consultation, & support
- Referrals & Phased roll out

TN START AST Phased Roll Out Plan



TN START AST Organization Chart



Where Are We Now?

- Launched phase 1 on July 21st –accepting referrals
- Annual State and Federal Funding. Funding also provided for training by the Council on Developmental Disabilities
- All staff undergo internal training & Certification Training with START



Where Are We Now?

- TN START AST Advisory Council – Meets Quarterly
- Ongoing System Analysis & Systems Change
 - Addition of three TN START Resource Center locations
 - Training & Collaboration with existing Behavior Respite locations
- Continuation of Systemic Collaboration & Support to
 - Identify gaps in the crisis system for individuals with IDD
 - Establish inter-agency partnership agreements
 - Offer MHIDD training
- TN START Training

For more information:

Visit our website:

<https://www.tn.gov/didd/ast>

Michelle Bagby, M.A., LBA, BCBA

Director of Behavioral Health & Crisis Services

TN START Clinical Director

(615) 913-0352

Michelle.Bagby@tn.gov



Things Do Not Change: We Change

